



RUSTIC
EXTERIOR DESIGN



TRADITIONAL
EXTERIOR DESIGN



FOLK VICTORIAN
EXTERIOR DESIGN



GERMAN COTTAGE
EXTERIOR DESIGN

THE
NORMAN

FROM OUR CLASSIC COLLECTION



MODERN FARMHOUSE

EXTERIOR DESIGN

~2,805 SQ FT

~3,540 SQ FT W/ BASEMENT

Additional exterior designs are available. See back panel for more information



ELIZABETH
SPRINGS

For more information call 919-249-7008 or visit [ElizabethSprings.com](https://www.ElizabethSprings.com).



BASEMENT ~735 SQUARE FEET

BASEMENT OPTION



BASE FLOOR PLAN 1ST FLOOR ~2,805 SQUARE FEET
W/ BASEMENT ~3,540 SQUARE FEET

BASE OPTION



2ND FLOOR ~2,805 SQUARE FEET
W/ BASEMENT ~3,540 SQUARE FEET

SECOND FLOOR OPTIONS

ALTERNATE
MASTER BATH



RUSTIC
EXTERIOR DESIGN



TRADITIONAL
EXTERIOR DESIGN



FOLK VICTORIAN
EXTERIOR DESIGN



MODERN FARMHOUSE
EXTERIOR DESIGN

THE NORMAN PLUS

FROM OUR CLASSIC COLLECTION



GERMAN COTTAGE

EXTERIOR DESIGN

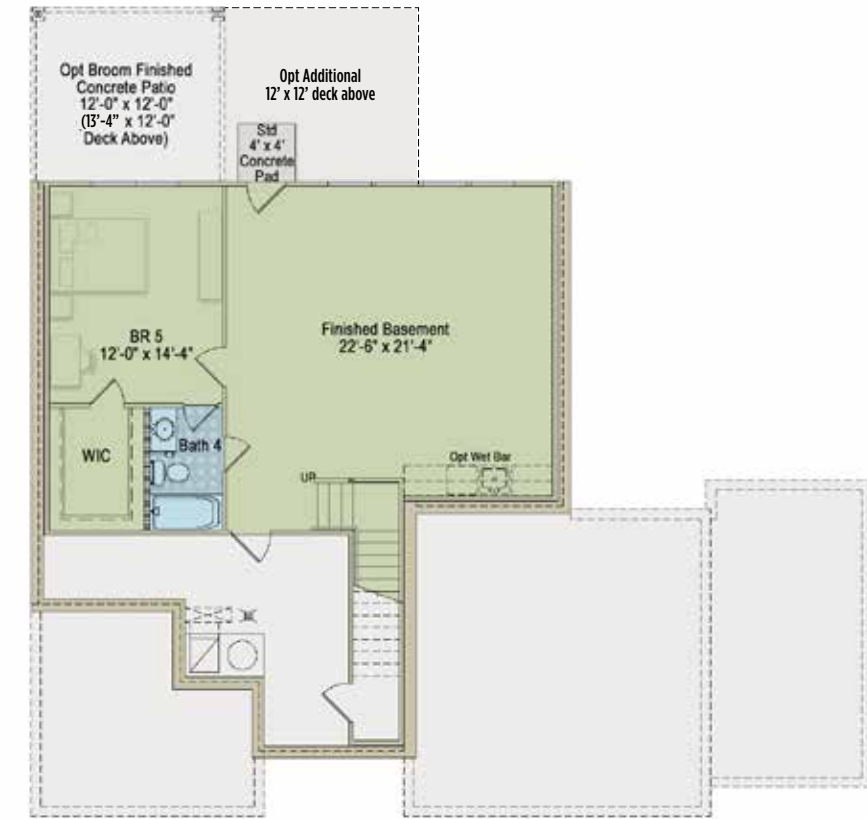
~3,171 SQ FT

~4,063 SQ FT W/ BASEMENT

Additional exterior designs are available. See back panel for more information

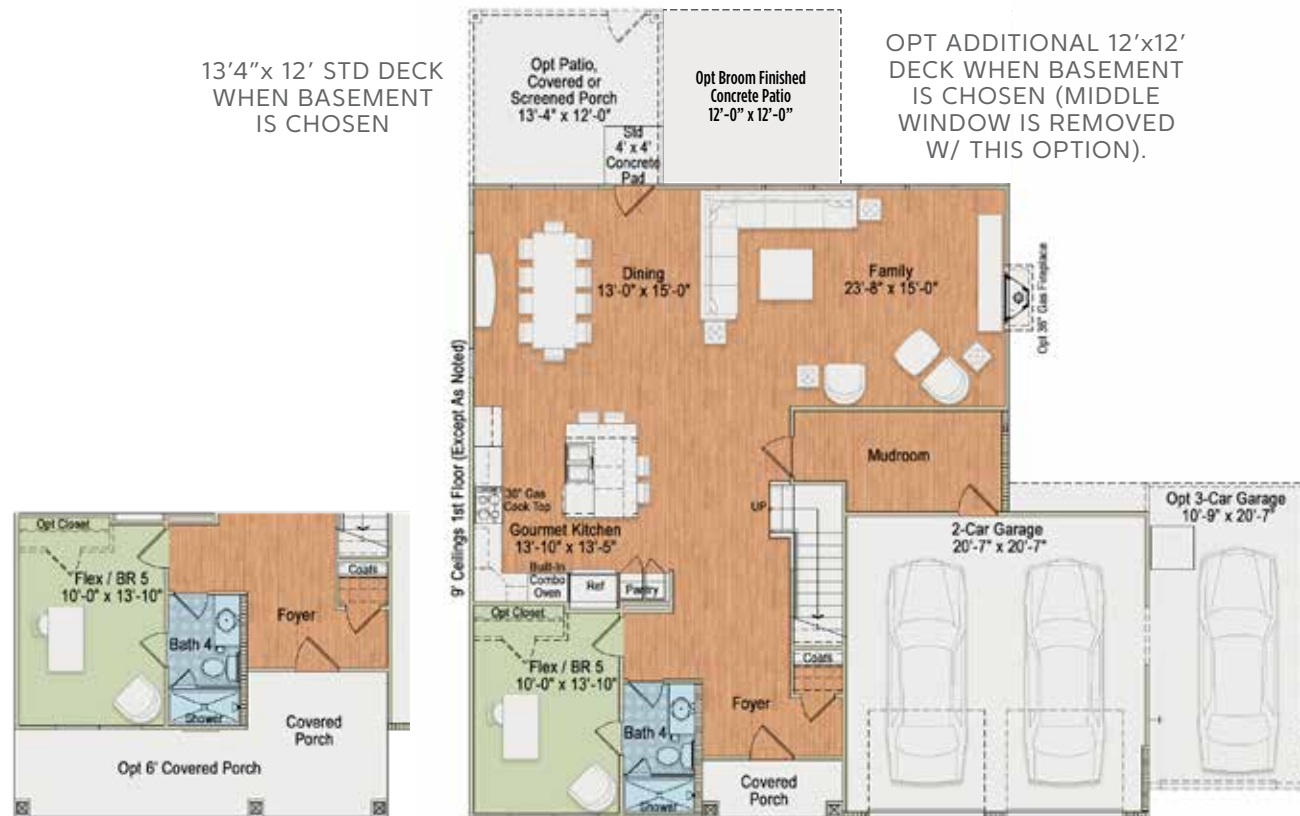


For more information call 919-249-7008 or visit [ElizabethSprings.com](https://www.ElizabethSprings.com).



BASEMENT OPTION ~892 SQUARE FEET

BASEMENT OPTION



1ST FLOOR: ~3,171 SQUARE FEET
W/ BASEMENT ~4,063 SQUARE FEET

NORMAN PLUS FIRST FLOOR



2ND FLOOR ~3,171 SQUARE FEET

SECOND FLOOR OPTION