



RUSTIC
EXTERIOR DESIGN



TRADITIONAL
EXTERIOR DESIGN



FOLK VICTORIAN
EXTERIOR DESIGN



GERMAN COTTAGE
EXTERIOR DESIGN

THE NORMAN

FROM OUR CLASSIC COLLECTION



MODERN FARMHOUSE

EXTERIOR DESIGN

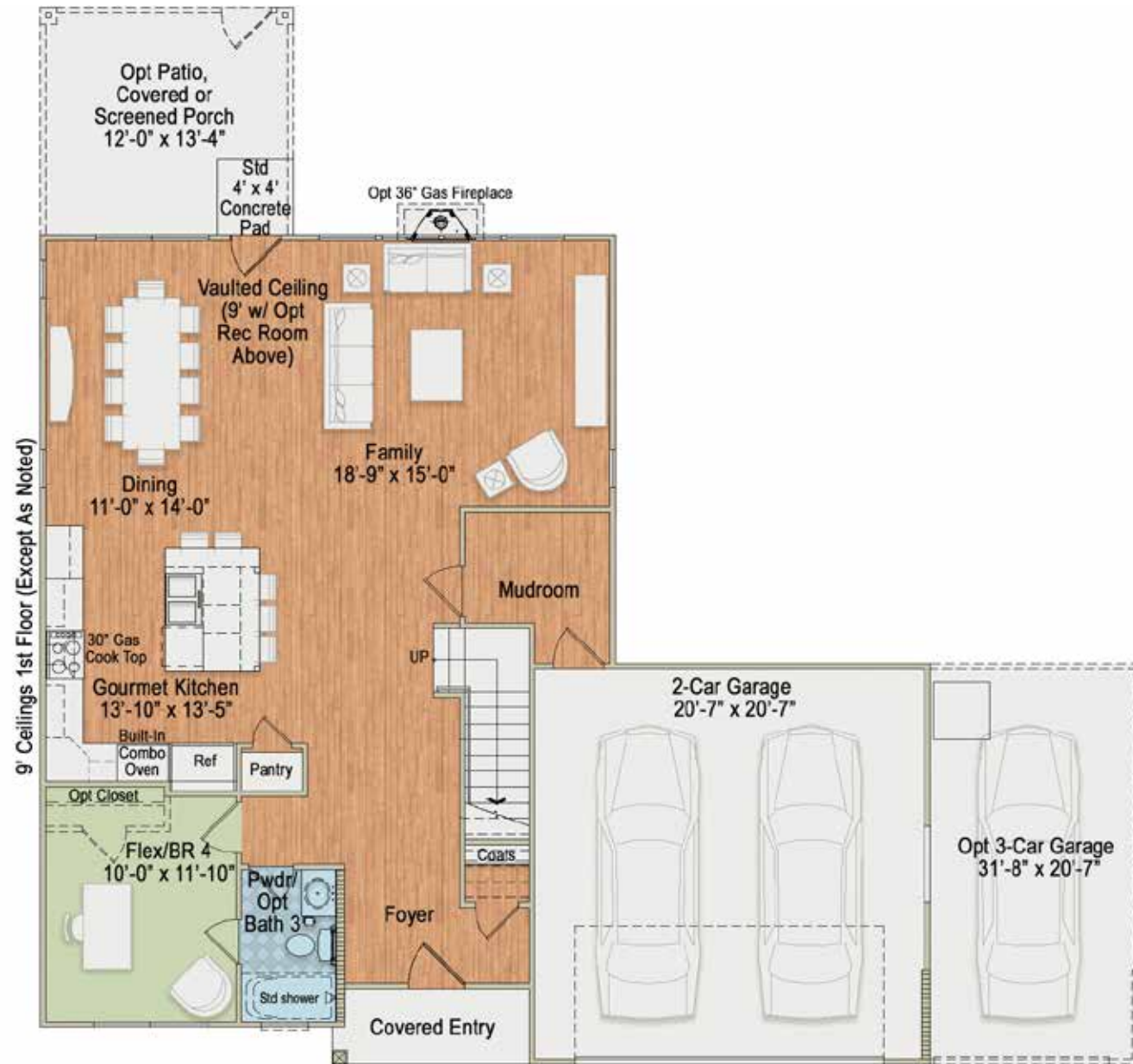
~2,204 TO 2,772 SQ FT

~2,900 TO 3,529 SQ FT W/ BASEMENT

Additional exterior designs are available. See back panel for more information



For more information call 919-249-7008 or visit [ElizabethSprings.com](https://www.ElizabethSprings.com).



EXTENDED 1ST FLOOR ~2,772 SQUARE FEET
 (REQUIRES 2ND FLOOR REC ROOM OR BEDROOM #5)W/
 BASEMENT ~3,529 SQUARE FEET

BASE OPTION



BASEMENT – EXTENDED
 (REQUIRES 2ND FLOOR REC ROOM OR BEDROOM #5)
 ~757 SQUARE FEET

BASEMENT OPTIONS



2ND FLOOR W/ REC ROOM ~2,772 SQUARE FEET
 W/ BASEMENT ~3,529 SQUARE FEET



2ND FLOOR W/ OPTIONAL BEDROOM #5 ~2,772 SQUARE FEET
 W/ BASEMENT ~3,529 SQUARE FEET

SECOND FLOOR OPTIONS



RUSTIC
EXTERIOR DESIGN



TRADITIONAL
EXTERIOR DESIGN



FOLK VICTORIAN
EXTERIOR DESIGN



GERMAN COTTAGE
EXTERIOR DESIGN

THE NORMAN PLUS

FROM OUR CLASSIC COLLECTION



MODERN FARMHOUSE

EXTERIOR DESIGN

3,152 SQ FT

4,044 SQ FT W/ BASEMENT

Additional exterior designs are available. See back panel for more information



For more information call 919-249-7008 or visit [ElizabethSprings.com](https://www.ElizabethSprings.com).



1ST FLOOR: ~3,152 SQUARE FEET
W/ BASEMENT ~4,044 SQUARE FEET

NORMAN PLUS FIRST FLOOR



BASEMENT OPTION ~892 SQUARE FEET

BASEMENT OPTION



2ND FLOOR ~3,152 SQUARE FEET

SECOND FLOOR OPTION